



Finish 025 white
3½" to 4½" return
2" to 3" clearance

Superfine® Traverse Rods

Simply the standard of the industry. Often imitated. Never equaled.

Loaded with exclusives. Patented profile for erect headings. Coated sliding surfaces; self lubricating components. Heavy-gauge, roll-formed steel; baked enamel finish, inside and out. Finest pulley sets available.

Continuous cord lacing with cord tension pulley. Positive locking supports, drop-in and push-in brackets and more!

Note: Push-in Superfine Rods available in bulk-pack only. See price list for details.

Single Two-Way Draw (Drop-in Brackets)

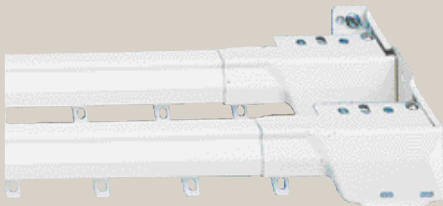
Number	Extension	Slides	Supports
3023	30" to 48"	10	0
3024	38" to 66"	14	1
3025	48" to 86"	20	1
3026	66" to 120"	30	2
3027	86" to 150"	38	2
3028	100" to 180"	46	3
3029	160" to 300"	80	5

Single One-Way Draw (Drop-in Brackets)

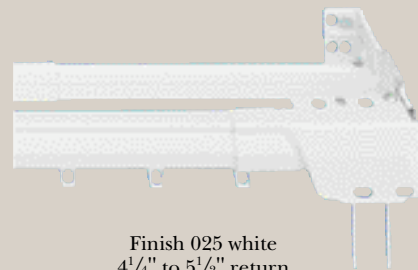
Number	Extension	Slides	Supports
3229	30" to 48" cords right	11	2
3227	38" to 66" cords right	17	3
3231	48" to 86" cords right	21	3
3237	66" to 120" cords right	33	4
3233	86" to 150" cords right	41	4
3235	100" to 180" cords right	47	5
3230	30" to 48" cords left	11	2
3228	38" to 66" cords left	17	3
3232	48" to 86" cords left	21	3
3238	66" to 120" cords left	33	4
3234	86" to 150" cords left	41	4
3236	100" to 180" cords left	47	5

Combination Rod Sets

Two rods on one set of brackets. Install quickly. Easy to use.



Finish 025 white
5½" to 6½" return
1" to 1½" clearance



Finish 025 white
4¼" to 5½" return
¾" to 1¾" clearance

Double Traverse Rod

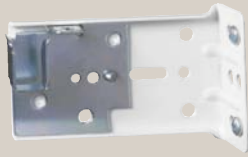
Two-way draw; easily converts to one-way draw.

Number	Extension	Slides	Supports
3253	30" to 48"	10	0
3255	48" to 86"	20	1
3257	86" to 150"	38	2
3258	100" to 180"	46	3

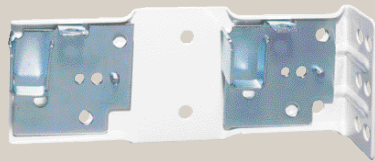
Traverse Plain Rod Set

Two-way draw; easily converts to one-way draw. Inner rod holds pocketed curtains.

Number	Extension	Slides	Supports
3263	30" to 48"	10	0
3265	48" to 86"	20	1
3267	86" to 150"	38	2
3268	100" to 180"	46	3



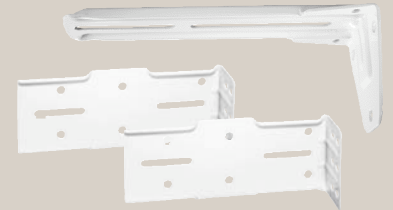
3302B
3½" - 4½" return
2" - 3" clearance



3305
5½" - 6½" return
1" - 1½" clearance



3980
2" Extension
Plate Bracket



3516B
Double Traverse
Conversion Kit

Double Traverse Rod Component (Drop-In Bracket)

Number	Description	Return	Clearance
3301	Single Bracket	2½" - 3" return	1" - 1½" clearance
3302B	Single Bracket	3½" - 4½" return	2" - 3" clearance
3305	Double Bracket	5½" - 6½" return	1" - ½" clearance
3306	Double Bracket	6½" - 7½" return	1" - 1½" clearance
3980	2" Extension Plate Bracket		
3516B	Double Taverse Conversion Kit		



3576
2½" - 3" return
1" - 1½" clearance



3558
Universal
Support Clip



3580
5½" - 6½" return
1" - 1½" clearance



9498
Master Slides



L909E
Traverse Slides

Double Traverse Rod Component (Drop-In Bracket)

Number	Description	Return	Clearance
3576	Single Support	2½" - 3" return	1" - 1½" clearance
3577	Single Support	3½" - 4" return	2" - 3" clearance
3558	Universal Support Clip		
3580	Double Support	5½" - 6½" return	1" - 1½" clearance
3581	Double Support	6½" - 7½" return	1" - 1½" clearance
3590B	2" Extension Plate - Support		
9498	Master Slides		
L909E	Traverse Slides, 10p/bg		
9943E	Cord Tension Pulley		

Kirsch Window Fashions ©2005
4110 Premier Drive, High Point, NC 27265
Phone: 1.800.225.1988 • Fax: 1.800.545.2325
www.kirsch.com